



Robbiki Leather City





Introduction

The Robbiki Leather City (RLC) project is one of the most important national projects that will bring many benefits to the state and society. This project comes within the framework of the Ministry of Industry's strategy aimed at developing and raising the level of the leather tanning industry sector in Egypt, through the establishment of a specialized industrial city in the Robbiki area to advance and develop the sector to increase the added value of the Egyptian product in order to achieve competition in global markets, increase exports, and provide more job opportunities.

RLC represents a qualitative leap in tanning and leather manufacturing activities. By combining the latest international technologies with authentic Egyptian craftsmanship, RLC provides world-class quality leather products that meet the needs of local, regional, and international markets, thereby making it an attractive destination for investors seeking an ideal business environment.



Robbiki Leather City

Objectives

- Transfer, resettle and develop the tanneries of ancient Egypt in the new city of Robbiki to contribute to removing one of the sources of pollution in Cairo and preserving the area of the Wall of Magra Al-Oyoun as an archaeological area.
- Developing the leather sector and upgrading its products to export a value of (\$1 billion) per year. (Increasing growth - increasing investments - increasing exports).
- Achieving social development (providing new job opportunities - increasing average wages), as the project provides (25 thousand job opportunities / compared to 10 thousand currently in Egypt).
- Increasing the production of tanned leather from (100 million feet²/year, semi-finished - Wet Blue) to (310 million feet²/year, finished - finished)
- Raising worker productivity from (60 ft² /worker/day) to the global average (250 ft² /worker/day).
- Meeting the needs of internal and external markets with an annual production capacity of 200 million square feet.
- Providing opportunities for new investments (Egyptian - Joint – Foreign) and linking the leather sector to the global market to achieve an industrial boom in the tanning and leather sector.
- Improving the social situation of tannery workers.
- A new vision for using tannery hides to manufacture a final product.

Targeted Industries:

- **Leather tanning:** It is a basic process during which raw hides are transformed into leather ready for use in various industries.
- **Finished leather products industries:** such as shoes, bags, leather clothes, leather furnishings, and many other products.
- **Complementary industries:** This includes the glue and chemicals industries used in tanning



Project Importance

- Providing investment, industrial, commercial & service investment opportunities in a modern way to meet both the local & foreign market's requirements.
- Providing the leather industry system by new technologies based on a high-quality & low-cost mass production, achieving partnership with fashion houses & global brands, in addition to modernizing the quality system, information technology services & e-marketing.
- Achieving industrial integration through completing the growth plan of RLC in accordance with modern approaches.
- Covering the gap at the local markets & substituting imports of leather products & footwear.
- Doubling the value added of leather, manufacturing it locally to be exported to the surrounding markets with the slogan of «Made in Egypt».
- Providing the Egyptian cadres with suitable job opportunities & supporting them with continued technical & social support.



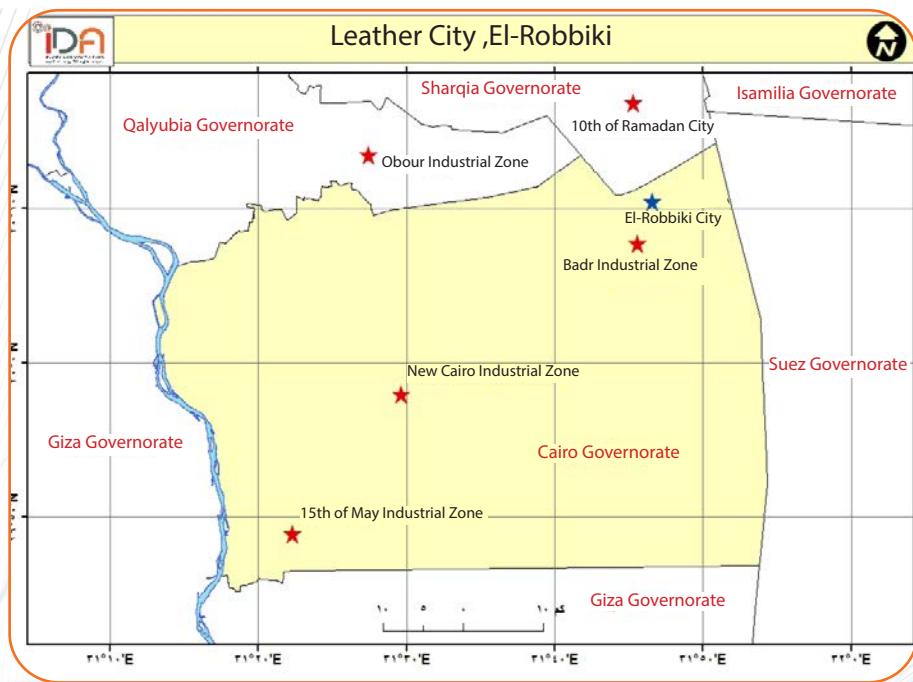


General location of Robbiki leather city (RLC)

Zone	Side	Distance from RLC
10th of Ramadan industrial city	North	15 km
Robbiki industrial zone	North	10 km
Badr industrial zone	South	10 km
Obour industrial zone	West	40 km
5th settlement industrial zone	South	50 km
Suez seaport	East	100 km
Port Fouad seaport	North	156 km
Cairo Airport	West	50 km
Administrative Capital Airport	Southeast	24 km



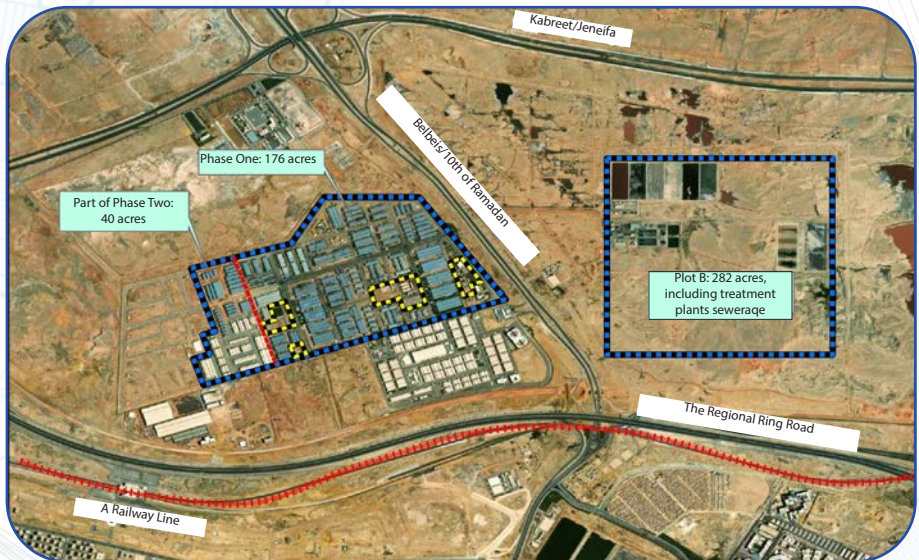
General location of Robbiki leather city (RLC)





Project Phases

- First phase: 176 acre
- Second phase : 109 acre
- Third phase: 111 acre
- Treatment plants for general wastewater, industrial wastewater, and chromium: covering an area of 282 acres.





Main Features of RLC Project

- Specialized city in manufacturing leather and its final products.
- Availability of raw material.
- Availability of production requirement industries.
- Stores for selling final products.
- Stores for selling production requirements.
- High-level technology centers to provide support and advice.
- Specialized training centers.
- A specialized treatment plant for sewage and industrial waste at the highest level.
- Availability of industries based on recycling of wastes.
- Environmental compatibility



Transport & Communication Networks

- Transportation networks, including roads and all modern modes of transport.
- Ten public bus lines from inside the city.
- Train station.
- Number of civil service lines all day long to & from all governorates.
- A Light Rail Transit (LRT) station in RLC.



Public Services & Utilities at the Project Phases

- Administrative building of three floors; including the administrative headquarters of the city administration company (commercial banks - shipping companies - customs clearance offices and different factories, etc)
- Police station - aid station- firehouse- mosque.
- leather technology center, equipped with machinery and equipment (including a 6200 m² model tannery and an 1800 m² model factory for leather product manufacturing), will be established.
- General stores on an area of 2700 m² at the services zone.
- Pressure reduction & purification of natural gas plants.
- External and internal water storage tanks and pumping stations to provide clean water to the project's network.
- Integrated infrastructure networks (fire & water networks- sanitation systems- electricity- telecommunications- natural gas).
- Road networks- parking areas- gates & fences- green belt & landscaping.
- It is proposed at the general plan of each phase to establish zones for logistic services to support various activities.



First phase

First phase: 176 acres

They have been designated as in-kind compensation for relocating the Old Cairo tanneries (Sur Magra El-Ayoun) to the Leather City in Robbiki and include:

- 216 industrial units, 151 tanneries, 65 chemical stores and leather stores

RLC includes the following public service buildings & utilities:

- Workshops of maintaining & manufacturing spare parts
- Administrative building
- Firehouse
- Police station
- Service stores
- Telephone exchange
- Training technology center



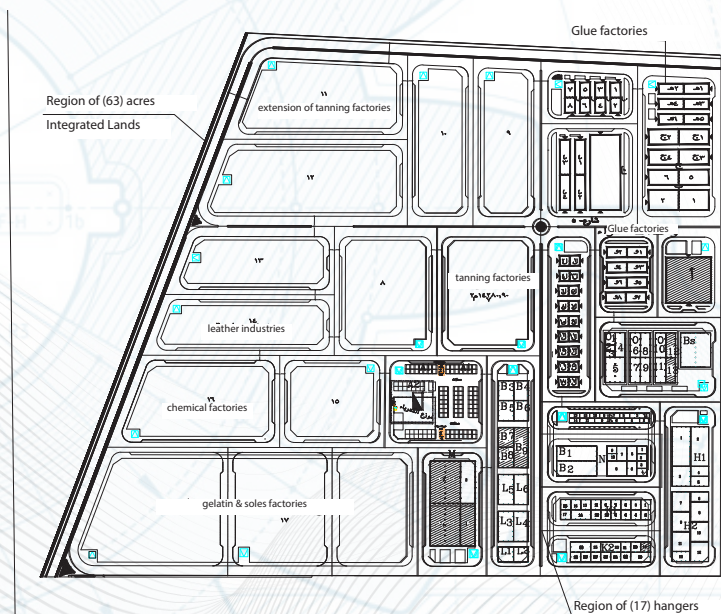


Second phase

Second phase: 109 acres

It was fully utilized and planned to be offered as land plots for tanning, gluing, gelatin & chemical activities. The land allocation is as follows:

- (18) acres allocated for glue factories, divided into (48) units.
- (22) acres for completing compensation for tanning factories, divided into (104) units.
- (6) acres designated for green areas and services.
- (63) acres available for investment in gelatin, chemical, and tanning activities.





Third Phase



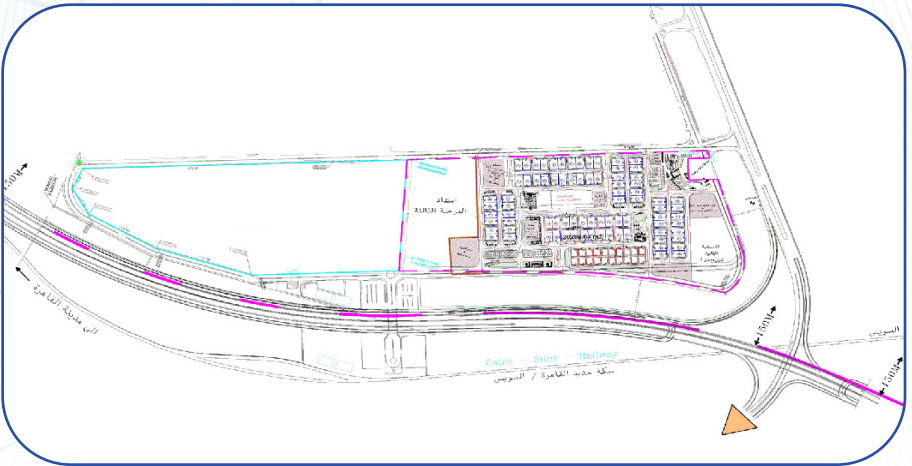
**Is currently being launched
for leather industry products**



Third Phase

Third Phase: 111 acres

- (90) acres for the construction of (100) hangars.
- (21) acres for the expansion of the third phase.
- (6066 m²) for a service station (gas, electricity, gasoline) for the city.



Project for establishing (100) hangars for manufacturing leather products and production requirements in the third phase of Robiki Leather City

- The project aims to manufacturing leather products that comply with the advanced global design systems, in terms of quality, appearance, and usage, in a fashionable way, to contributing effectively in increasing the marketing capabilities, both in Egypt & abroad, besides enhancing the quality variables of this industry.
- Manufacturing leather products is considered one of the most important handicraft industries in Egypt, because the environment of Egypt is full of materials that could be economically used in many leather products.





The project of establishing (100) hangers contains the following:



Industrial Units

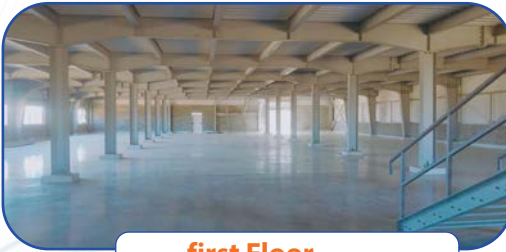
Hangars	No. of Floors	Area	Dimensions	Height
60 hangars	Ground + mezzanine	2000 m ²	24.88 * 40.20 m	11 m
20 hangars	Ground + mezzanine	2000 m ²	24.88 * 40.20 m	11 m
20 hangars	Ground + mezzanine	1000 m ²	20.00 * 25.00 m	11 m
68 workshops	1 Floor	121 m ²	11.00 * 11.00 m	5 m
warehouses building	Ground Floor	10000 m ²	60.00 * 168.90 m	8 m



Industrial Units



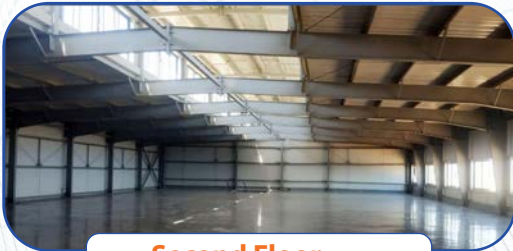
Hangars



first Floor



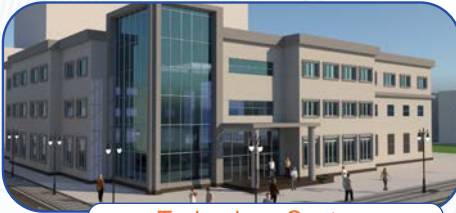
Workshops



Second Floor

Project Service Buildings

- Administrative Building and Bank
- Exhibition Hall
- Training Center
- Technology Center
- Commercial Units



Technology Center

A three-story building (ground floor + 2 additional floors) with a floor area of 1700m^3 each, totaling 5100m^3 .



Administrative Building and Bank

A three-story building (ground floor for the bank + 2 additional floors) with a floor area of 1050m^3 each, totaling 3150m^3 .



Training Center

A two-story building (ground floor + 1 additional floor) with a floor area of 1050m^3 each, totaling 2100m^3 .



Exhibition Hall

A three-story building (ground floor + 2 additional floors) with a floor area of 5330m^3 , totaling 15990m^3 .







Commercial Units

A building with a total area of 2400m^3 , comprising 72 shops, each with an area of 20m^3 , and a supermarket.

Treatment Plants: Spanning 282 acres, the treatment plants include three phases:

- Chromium Recovery Plant: A plant with a capacity of 120m^3 per day, designed to treat and recover liquid chromium waste from the tanning process.
- High Salinity Industrial Wastewater Treatment Plant: A plant with a capacity of 600m^3 per day, equipped with shallow ponds for evaporating treated wastewater.
- General Industrial Wastewater Treatment Plant: A plant with a current capacity of 8000m^3 per day, currently being upgraded to handle $12,000\text{m}^3$ per day.
- Expansions are underway for the industrial wastewater treatment plant to increase its capacity to $24,000\text{m}^3$ per day.
- The secure sanitary landfill for solid waste generated by activities.
- Water Discharge Line: A pipeline is being constructed to discharge treated wastewater from Robbiki to the Tenth of Ramadan station.
- Six Evaporation Ponds: These ponds are used for evaporating highly saline water.



 New Cairo City : 42 Al Salam Axis
 +(202) 25370360
 +(202) 25370337
 19780

 info@ida.gov.eg
 www.ida.gov.eg
 /IDA.Egypt

